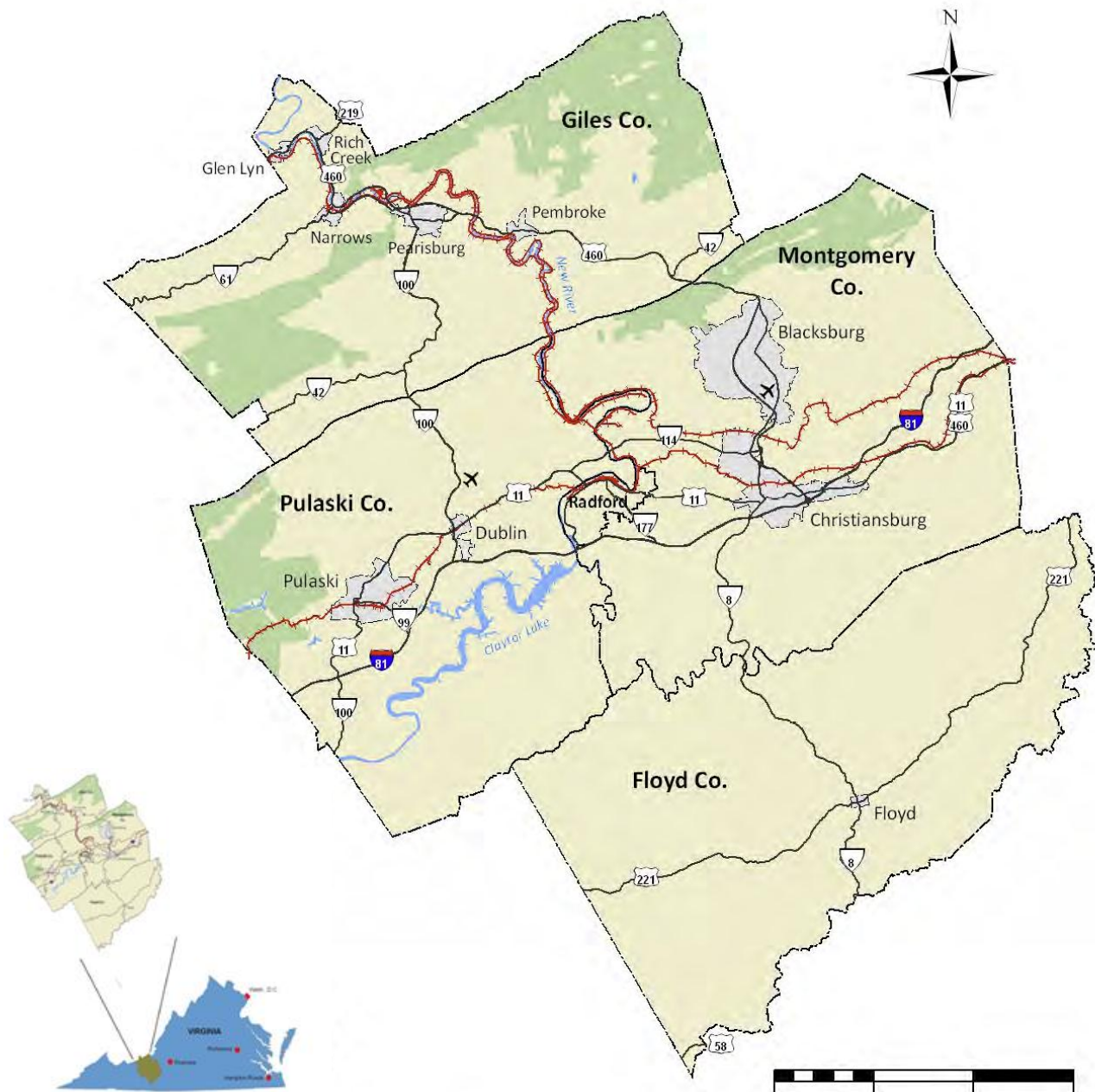


Current Transportation Options for Seniors in the New River Valley

Nancy Brossoie, PhD

Senior Research Associate
Center for Gerontology at Virginia Tech

Dec 6, 2012



Map created by the NRVPC, 2010. Sources: VDOF, US Census Bureau and VGIN.

Driving in Late Life

- Symbol of independence
 - Allows control of daily routines
- Losing the ability to drive is not considered a significant problem IF a spouse or partner still has the ability to drive.

Driving Support

- Local police perform courtesy checks and adjustments
- CarFit program periodically offered at local recreation centers

Driving Cessation

- Losing the ability to drive is generally attributed to
 - Age-related decline (slowing) of thinking and decision-making
 - Vision problems
 - Cognitive impairment

Public Transportation



Public Transportation Options for Seniors

- Reduced rates
- Deviated fixed routes
- Tuesday line – Warm Hearth Village / Blacksburg transit

Senior Perceptions on Public Transportation

- Takes too much time/ doesn't coincide with my daily schedule
- Does not take me where I need to go
- Does not connect to other transportation services
- Costs too much money

****Nominal fees may be too much for limited incomes**

Elderly Persons: Age 65 & Up

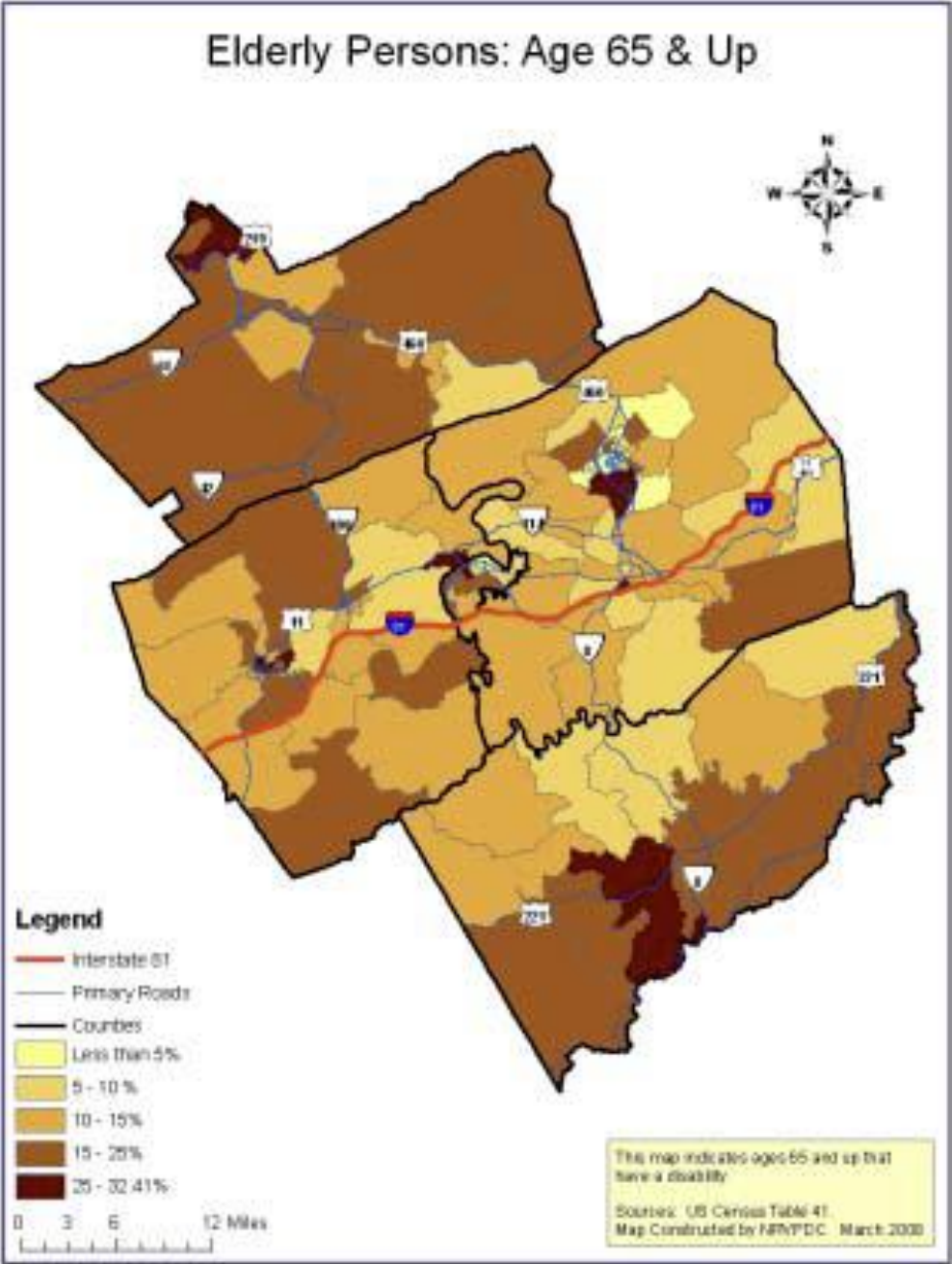
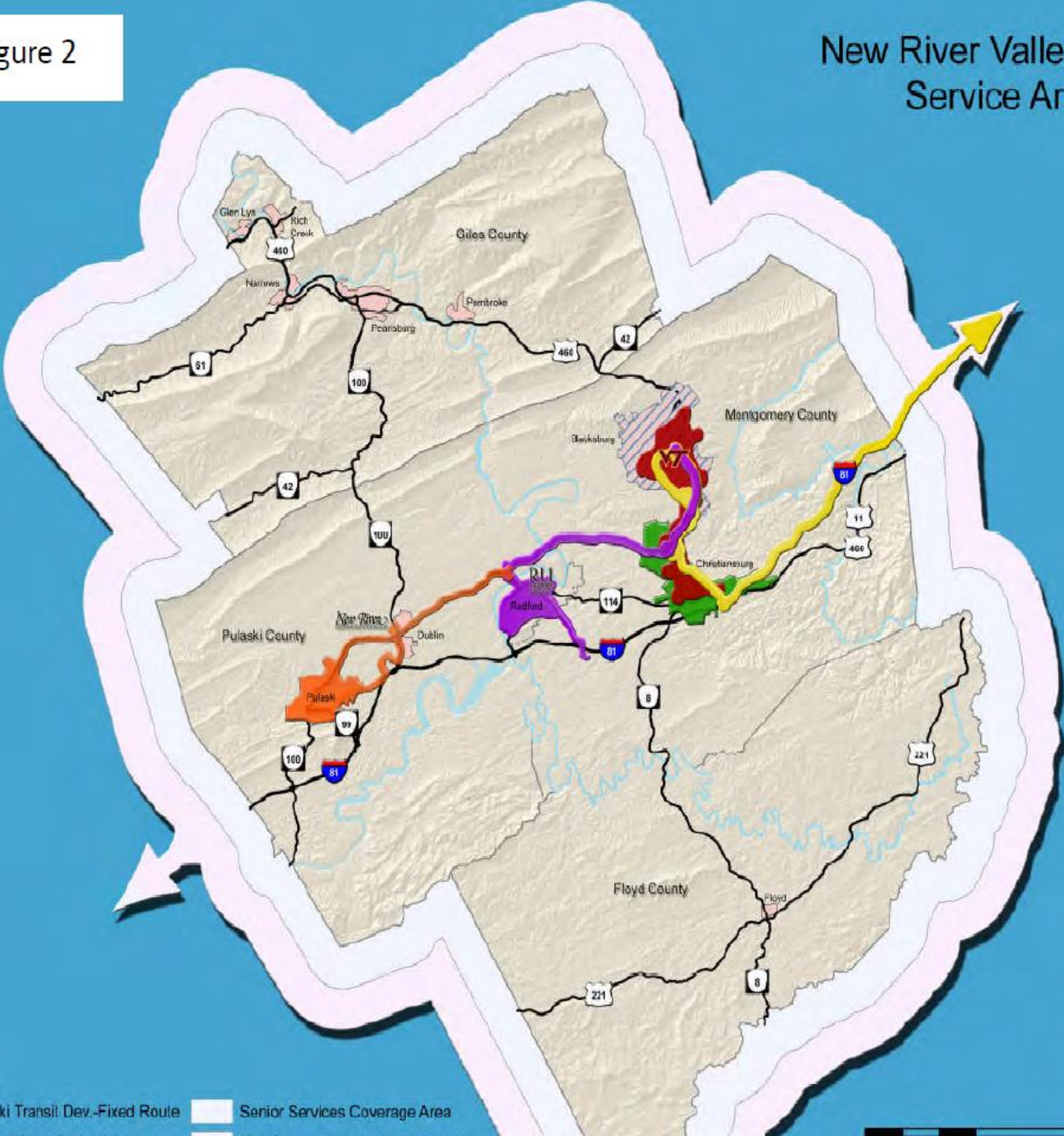


Figure 2

New River Valley Transit Service Areas



Legend

- Pulaski Transit Dev.-Fixed Route
- Senior Services Coverage Area

Specialized Transportation Services

Access to special transportation services is generally limited to

- Medicaid recipients
- Adults with physical disabilities
- Adults enrolled in a specific program or service

Special Services

- MedRide
- Senior Services
- Helping Hands
- Giles Family



- Churches

- Senior Mobility Coordinator - NRVAAA



Challenges For Public Transit Organizations

- Connectivity
 - Other transit lines in NRV
 - Roanoke
 - Medical facilities
 - Roanoke Regional Airport
 - Lynchburg
 - Amtrak
- Public perceptions

Transportation Successes in Senior Mobility

- Community partnerships
- Increased options
- Increased ridership
- Low fares

Future Plans

- Maintain or expand service routes
- Improve connectivity
- Target funding for expansion
- Examine alternatives

- Create a regional transportation partnership