



National Conference on Pavement Management
May 6-9, 2007
Norfolk, VA

“Meeting the Needs of Today and the Challenges of Tomorrow”

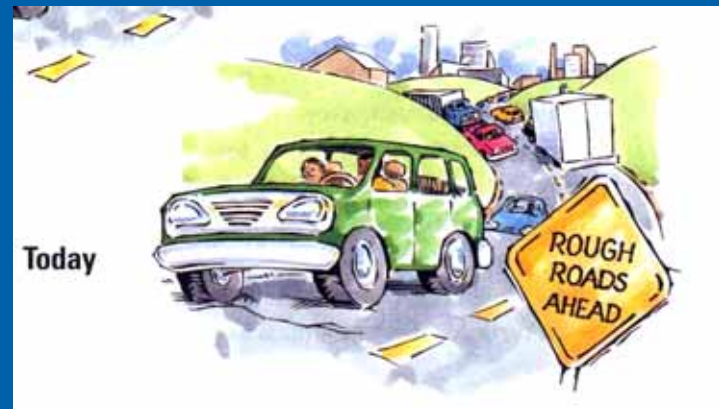
Quintin Elliot
State Asset Management Director
Virginia DOT



Key factors in management and preservation

- **Knowing the condition of the asset**
- **Applying the right treatment at the right time**
- **Managing the asset throughout the life-cycle to extend its use**

How did we get here?





How did we get here?

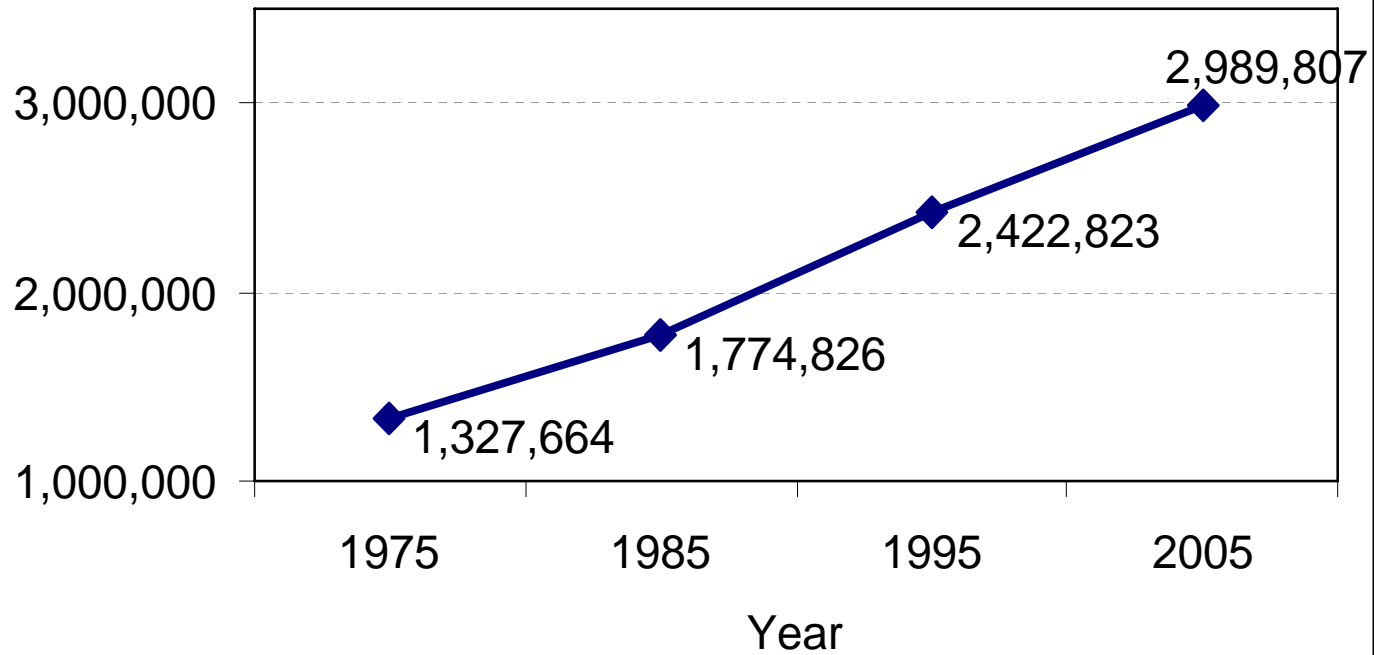
Total Public Road Mileage

4.5

Annual Vehicle Miles of Travel

Mileage

Annual VMT



“At today’s consumption rates, the nation will need another 280,000 miles of highway and 78 million more cars and trucks will jam roads by 2040, according to FHWA....”

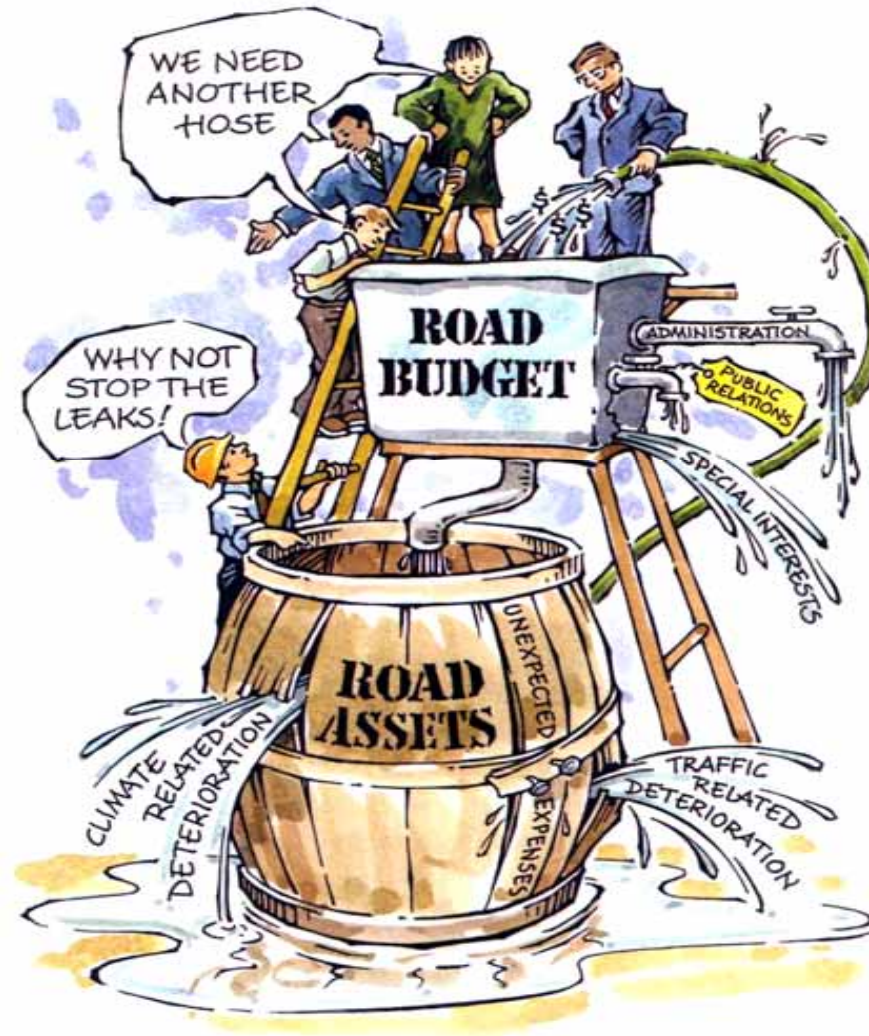
USA Today – April 25th, 2007

2005 Report Card for America's Infrastructure by ASCE

Roads: D



We Must Manage Our Road Assets

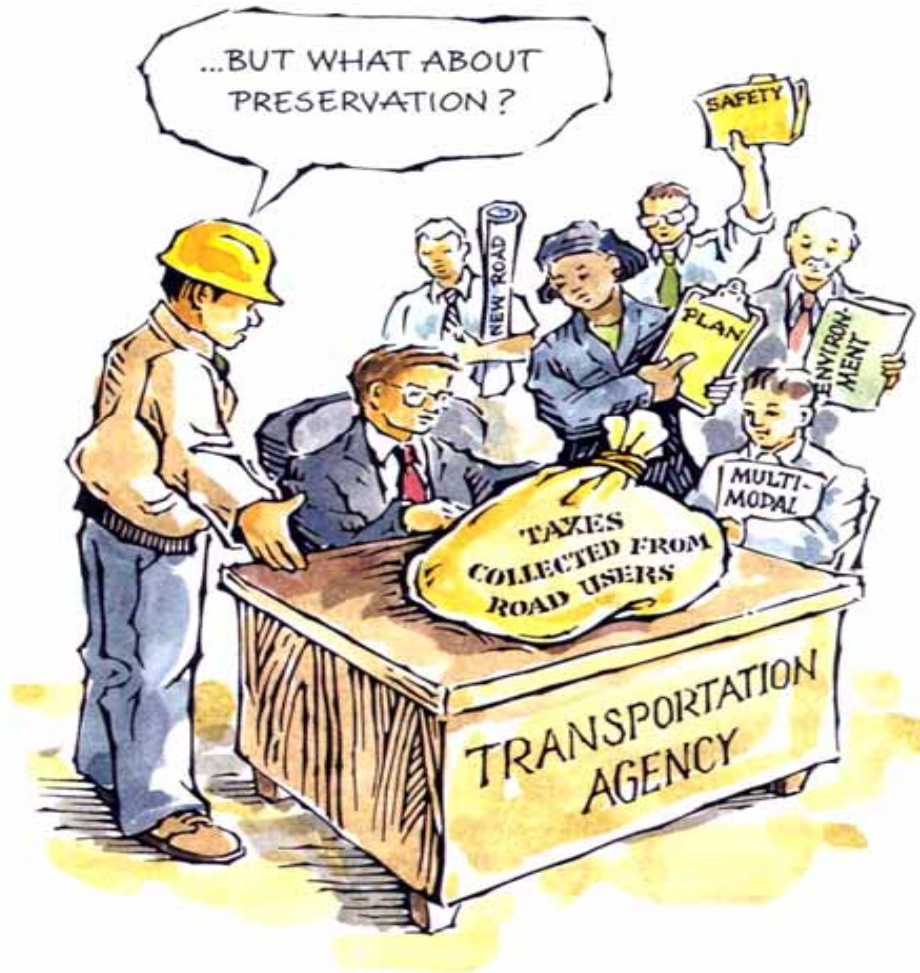




Challenges for Pavement Management & Preservation

- **Increased traffic and higher load limits**
- **Higher costs of materials**
- **Aging highway infrastructure**
- **Reduced time-frame to perform maintenance work**
- **Competing interests within highway agencies...**

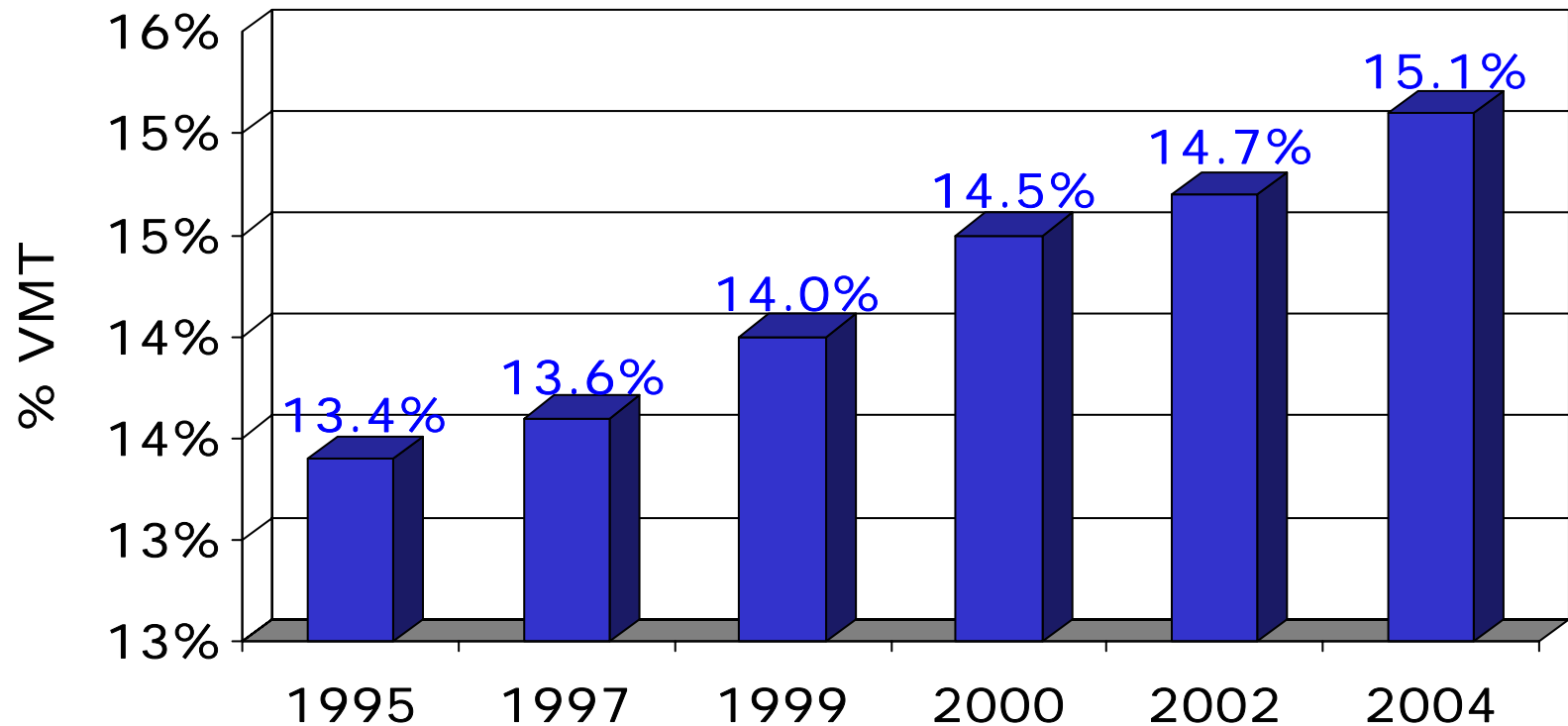
Financial Considerations



Courtesy: NCPP



% VMT on Pavements with "Not Acceptable" Ride Quality



"2006 Status of Nation's Highways, Bridges, and Transit: Conditions and Performance" - FHWA

The Road Ahead





Welcome to Virginia - enjoy your Stay

Thank You