



# Simultaneous Collection of GPR and Pavement Distress

---



- Why?
- How?
- What are the advantages of simultaneous approach?
- What benefits does it provide?
- Questions?

## Fugro does.....

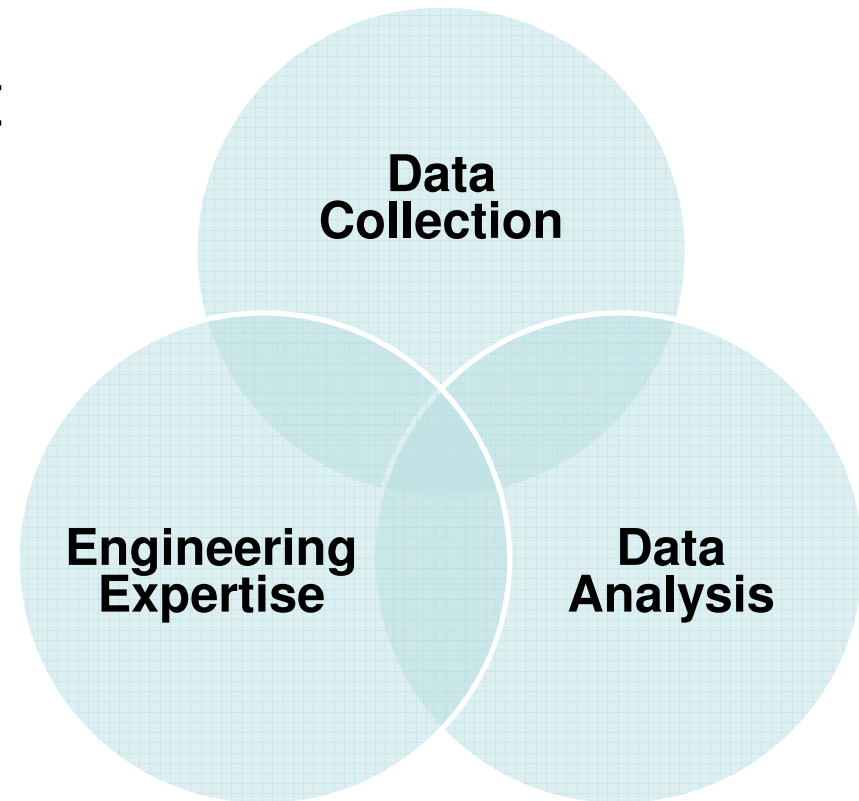
- As an organization, Fugro collects and interprets data related to the earth's surface, the soil and rocks beneath, and the structures built on it.
- Fugro Transportation Infrastructure leverages the company's collective expertise in the area of roads and ports to provide complete data collection, analysis, and interpretation for pavement and asset management.



# Why?

---

- Pavement Management requires information, analysis, and expertise
- Data accuracy and quality demands continue to grow
- Budget dollars are tight



# Traditional Pavement Distress Collection

Multiple data streams and images, synchronized with GPS

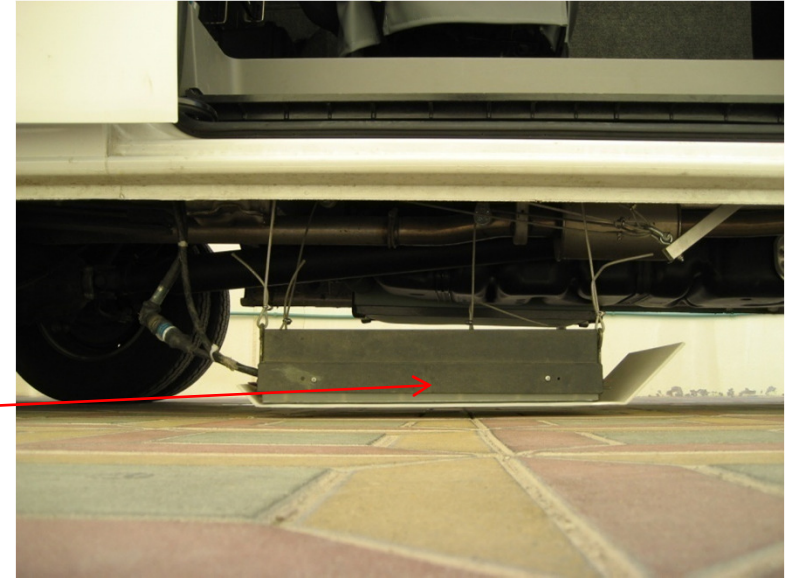


# Ground Penetrating Radar (GPR)

- GPR is a non-destructive, geophysical technique which produces an almost continuous cross section of the sub-surface
- Network level highway data can be collected at traffic speed
- Typical deliverables include:  
Segmentation of the network based on changes in construction, material type and material thickness.



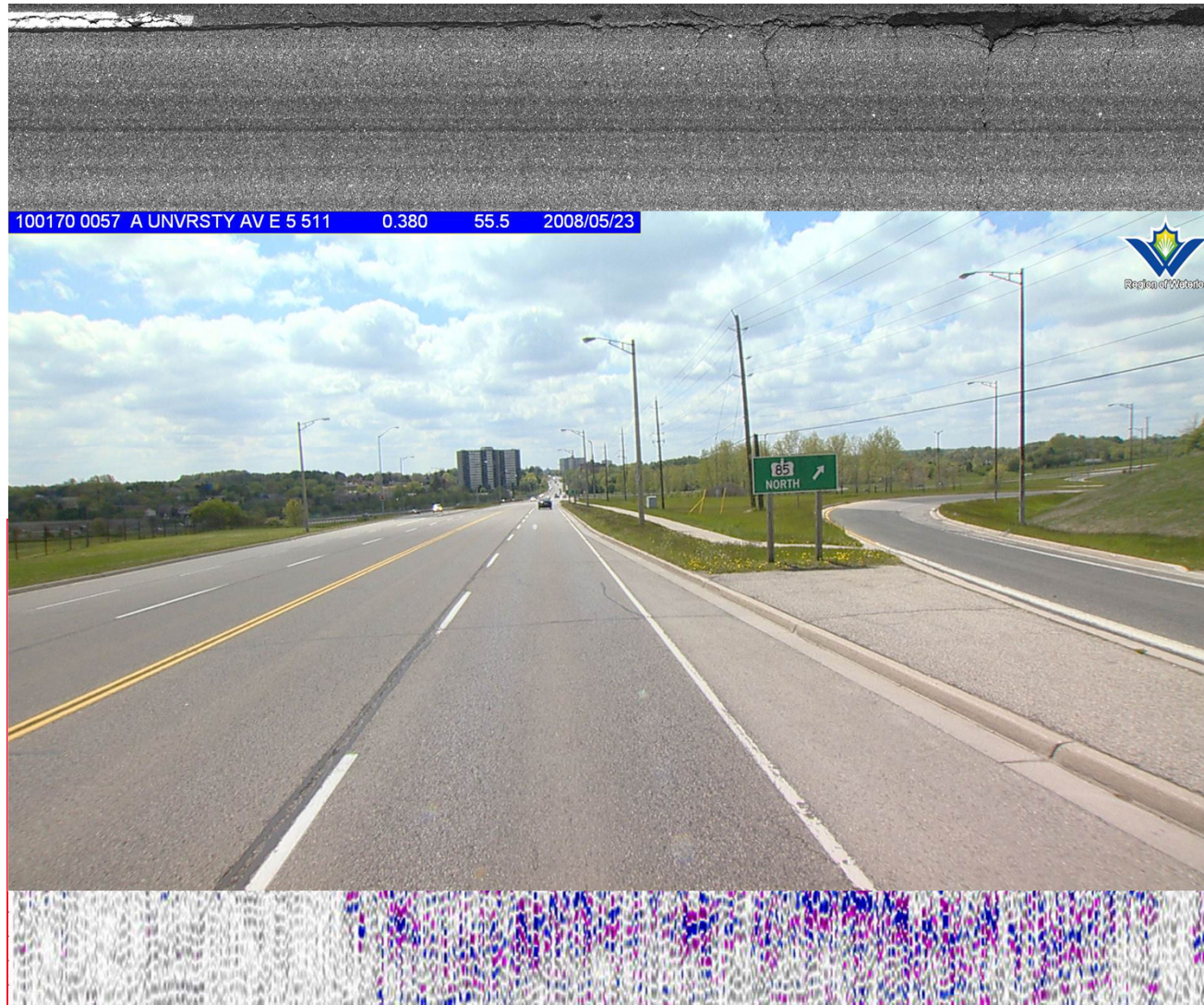
# How?



- Integrate a multi-channel dipole radar system
- Dipole Antennae operating at centre frequencies of 900 MHz and 1.5 GHz
- Fully synchronized with all other data streams



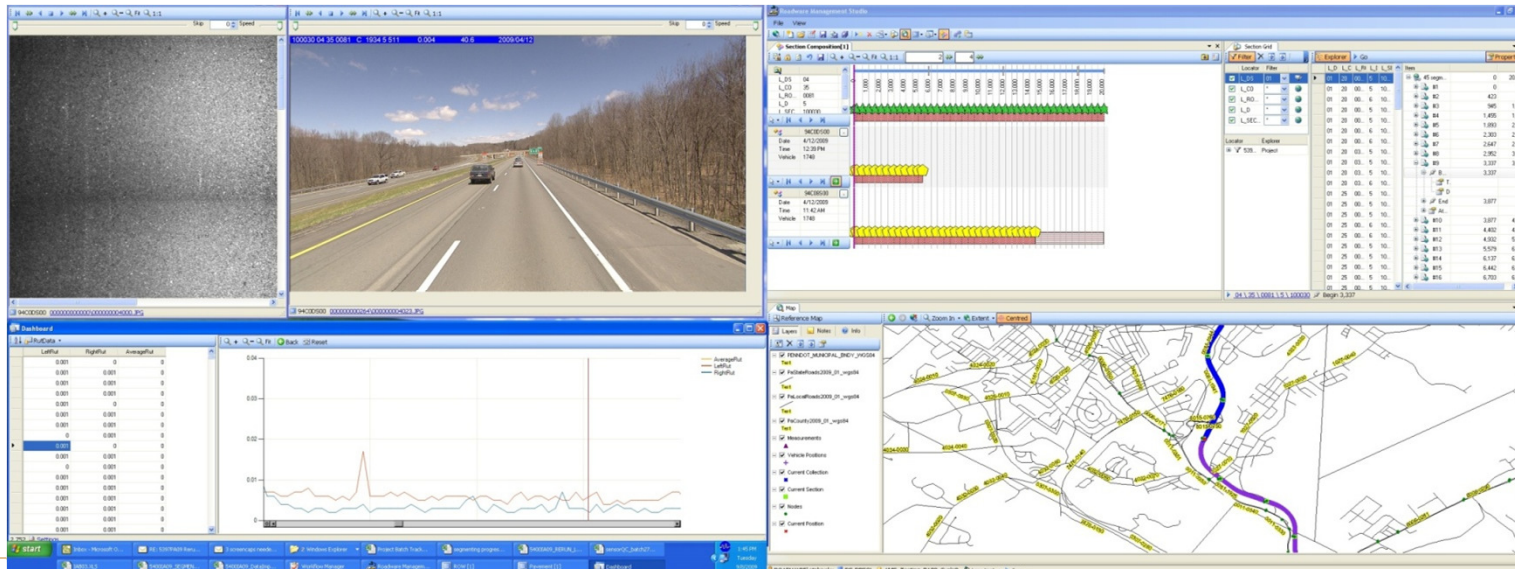
# Integrated Surface and Subsurface Data





# Benefits - Data Reduction

- Access to high quality HD images while providing analysis
- Validation of pavement types for homogeneous sectioning
- Updated information on layer/base/sub-base thickness



# Network Segmentation

profile    Construction change

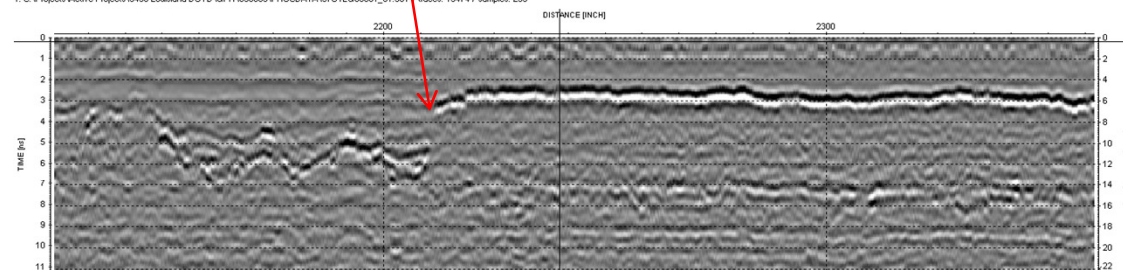


# Network Segmentation

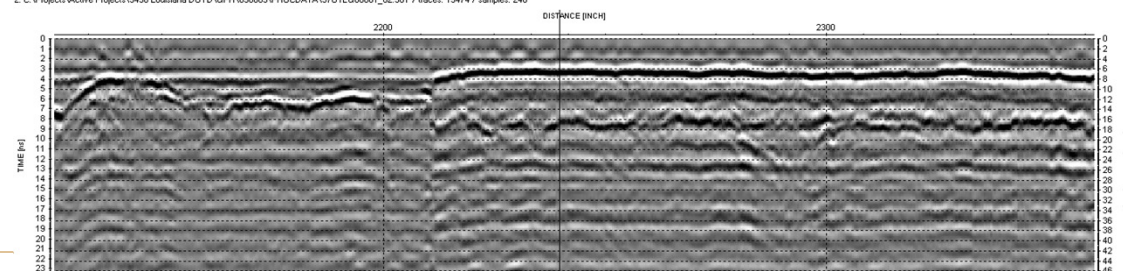
GPR indicates a clear construction change



1. C:\Projects\Active Projects\3438 Louisiana DOTD\GPR\090803\PROCDATA\9701EG00001\_01.30T / traces: 19474 / samples: 235



2. C:\Projects\Active Projects\3438 Louisiana DOTD\GPR\090803\PROCDATA\9701EG00001\_02.30T / traces: 19474 / samples: 246

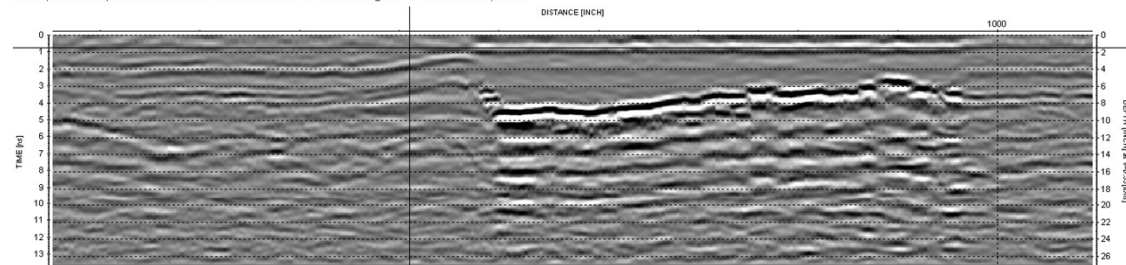


GPR interpretation benefits from the geography provided by the image

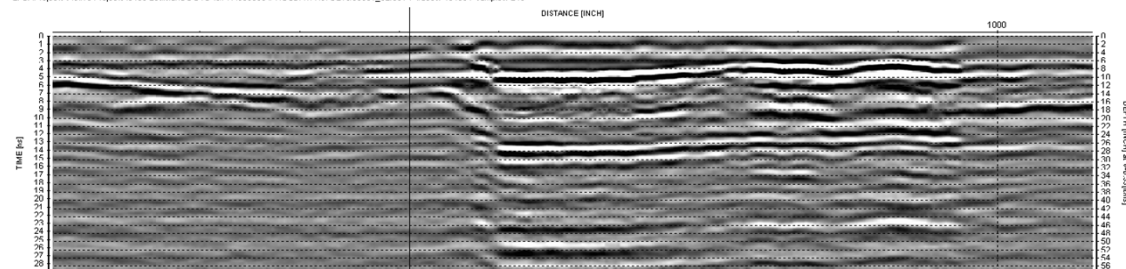
# Network Segmentation



1. C:\Projects\Active Projects\3438 Louisiana DOTD\GPR\090803\PROCDATA\97021G00001\_01.30T / traces: 40439 / samples: 236



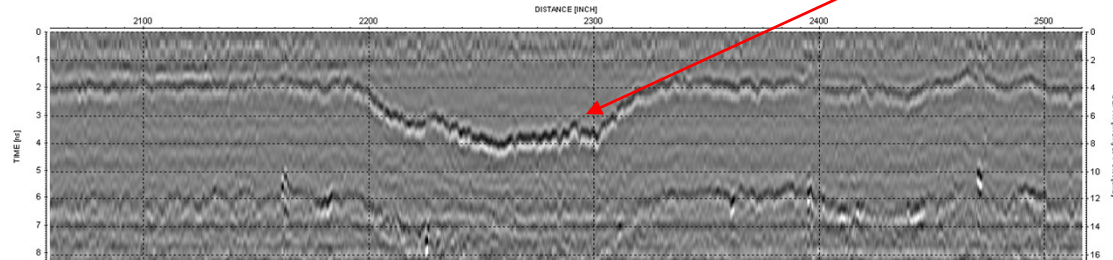
2. C:\Projects\Active Projects\3438 Louisiana DOTD\GPR\090803\PROCDATA\97021G00001\_02.30T / traces: 40439 / samples: 246



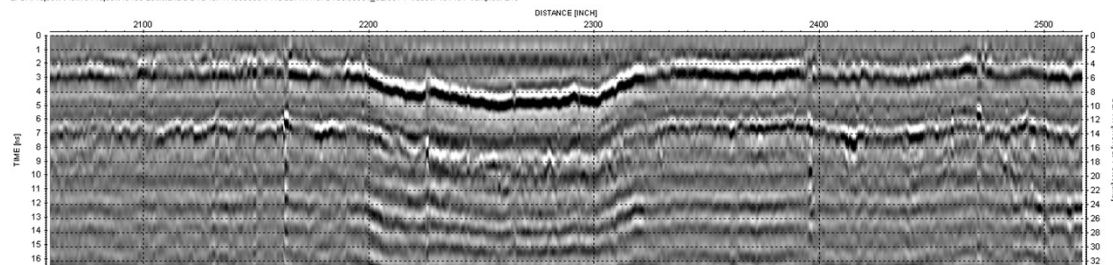
# Better Context – Better Information



1. C:\Projects\Active Projects\3438 Louisiana DOTD\GPRV090803\PROCDATA\A\97015600001\_01\_30T / traces: 43149 / samples: 251



2. C:\Projects\Active Projects\3438 Louisiana DOTD\GPRV090803\PROCDATA\A\97015600001\_02\_30T / traces: 43149 / samples: 249



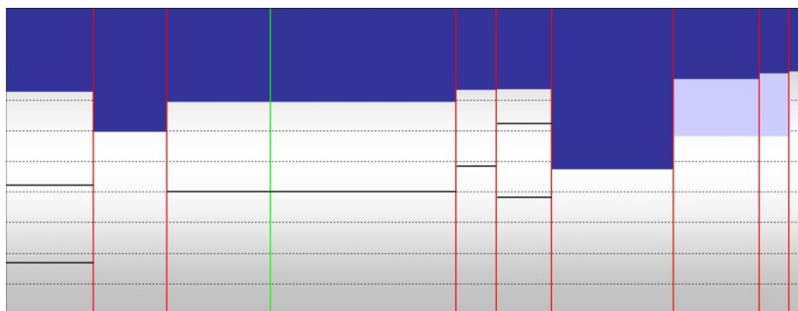
# Benefits – Cost and Risk



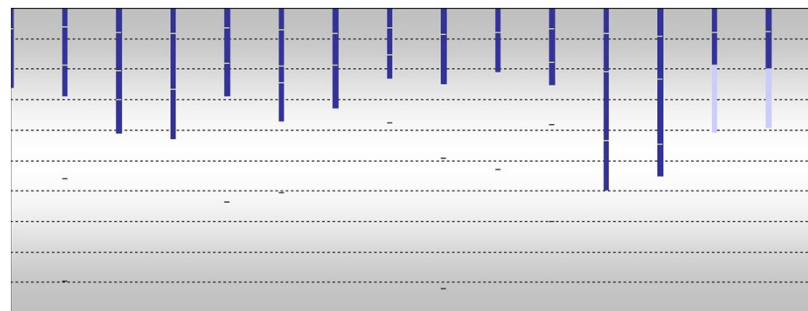
Approximately 65% of our costs are in the field.

# Collected GPR can be reanalyzed

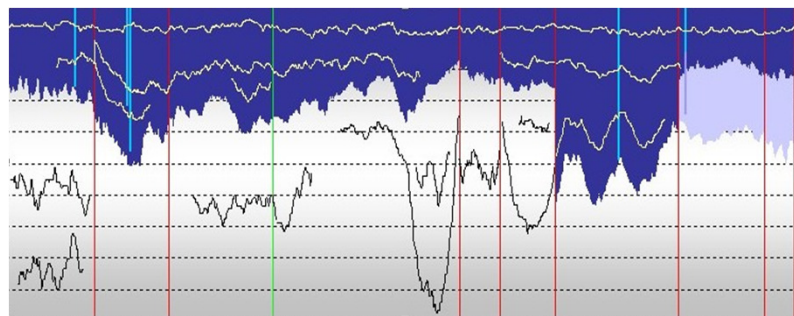
## Construction Database



Summary Construction



Point Construction



Detailed Construction

## In Conclusion....

---

- Adding a valuable data set at a fraction of the cost
- Validating or updating information about your network – sections and/or layer and base information
- GPR interpretation benefits from the images and GPS information traditionally used for automated distress
- The GPR data can be used for project level planning
- Allows for better planning!



