



Pavement Evaluation 2019



September 17-20, 2019
Roanoke, Virginia

Why Profiler Certification Sites are Necessary for Quality Data

Site Selection and Setup Matters

By

Tom Hershberger

Mandli Communications

Test the System, Not the Driver

- Configuration Files set parameters for collection *and* processing
 - Automatic Lane Detection
 - Batch Data Process
- Eliminates Driver Wander
 - 4,000+ points of data across the full width of lane
 - Extract pavement profiles from anywhere within the lane



Site Selection

- Coordination between Mandli and TDOT
 - Worked with TDOT on list of potential sites
 - Spent time in field reviewing sites



Criteria that Matters

- Safe access
- Ability to close test site
- Pavement type
- Minimum length 828 ft
 - 150 ft acceleration
 - 528 ft course
 - 150 ft deceleration
- No curvature
- Grade $\leq 2\%$
- No longitudinal wheel path cracking



Criteria that Matters (cont.)

- Well defined paint lines
- Clear Start/Stop markings
- Ability to place right and left profile references
- Speed limit \geq 35 mph
- IRI range 30-200 in/mi
 - Smooth 30-70 in/mi
 - Medium-smooth 95-135
 - Medium-rough 150-200



Site Setup

- Traffic control
- Collect ground truth (SurPRO)
- Photograph site



Site Setup (not Mandli)



SurPRO Data has a Shelf-Life

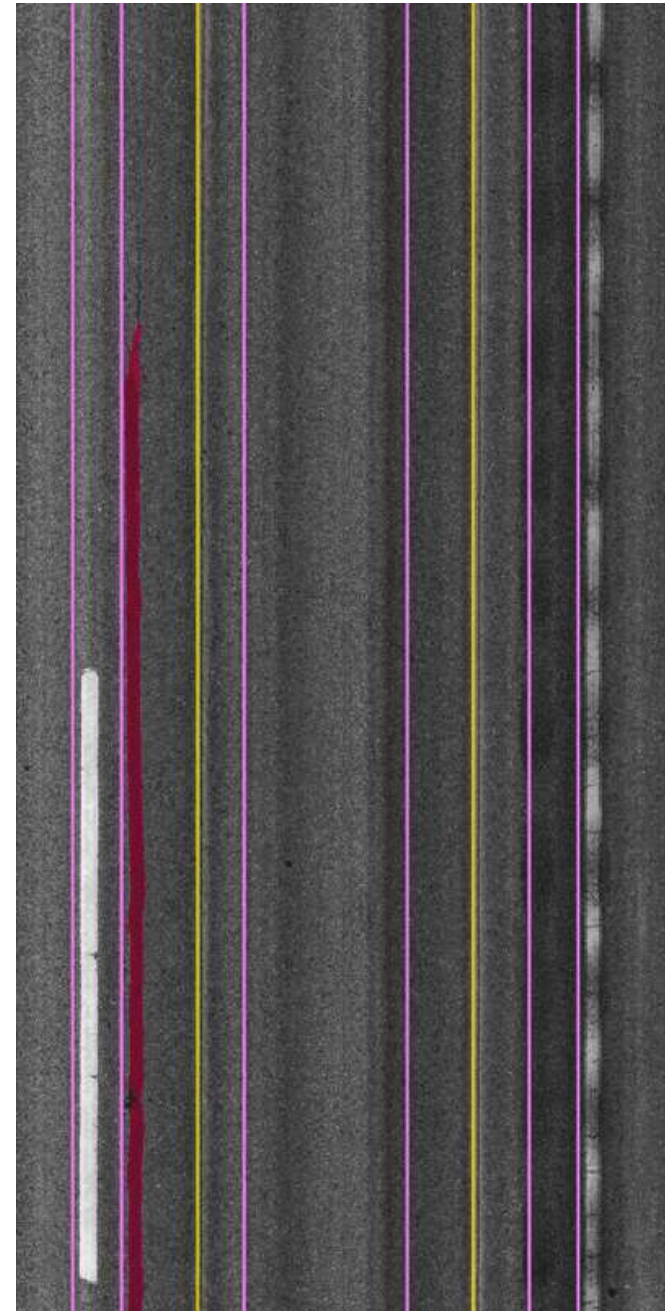
- Collect SurPRO data and vehicle data either:
 - Same day
 - Or similar weather conditions (temperature)
- Compare SurPRO data to collected data using ProVal



	Repeatability	Accuracy	Statistics	
	Repeatability - Left	Repeatability - Right	Accuracy - Left	Accuracy - Right
Comparison Count	45	45	10	10
% Passing	96	100	70	100
Mean	96	98	91	94
Minimum	91	96	88	93
Maximum	98	99	93	95
Standard Deviation	1.9	0.8	1.4	0.8
Grade	Passed	Passed	Passed	Passed

Site Maintenance

- Sites require repainting
- Re-Collect ground truth measurements w/SurPRO



TDOT Site Use

- Annual Certification
 - 4 TDOT regional warranty work profiling systems (RSP)
 - TDOT HQ pavement profiling system (LCMS)
- Comparison to Mandli systems (QA)



Lessons Learned

- How site selection impacts 3D paving systems
- Carved the way to successfully passing NCAT Certification
 - LCMS 1
 - LCMS 2



at AUBURN UNIVERSITY